

Playwrights Local Presents



A WORLD PREMIERE

THINGS AS THEY ARE



Written by David Todd
Original score composed by Ben Chasny
Directed by Anjanette Hall

Playwrights Local Presents
A World Premiere

THINGS AS THEY ARE

Written by David Todd
Original score composed by Ben Chasny
Directed by Anjanette Hall

May 12 – 28, 2017
Reinberger Auditorium
Cleveland, Ohio

CAST

Robert Hawkes -- Mature Wallace Stevens
Jason Markouc -- Young Wallace Stevens
Laura Starnik -- Elsie Stevens
Tessa Hager -- Holly Stevens
Robert Branch -- Garrett Stevens, W. C. Williams, and Ensemble
Kenzie Critzer -- Sybil Gage, Marianne Moore, and Ensemble
Jeanne Task -- Kate Stevens, Mrs. Baldwin, and Ensemble
Marco Liguori -- Robert Frost, Walter Arensburg, and Ensemble
Liam Stilson -- Crispin, Ed Livingood, and Ernest Hemingway

PERFORMING MUSICIANS

Ben Chasny -- Guitar
John Elliott -- Synthesizer/Electronics

CREATIVE TEAM

Inda Blatch-Geib -- Costume Designer
Nora Jeanne DeMila -- Assistant Director
Cleo D'Orio -- Commedia dell'arte Choreographer
Tom Hayes -- Carpenter
Michael Hinton -- Dance/Movement Choreographer
Emily Kovalcik -- Prop Designer
T. Paul Lowry -- Set & Projection Designer
Jonathan Maag -- Lighting Designer
Francesca Mamlin -- Stage Manager
Elizabeth Tofig -- Dramaturg
Kelly Tomko -- Production Manager
Dusten Welch -- Fight Choreographer

SETTING

Various locations in Reading, PA; New York City; Hartford, CT; the Florida Keys; and an imagined Paris, France. Various times in the life of Wallace Stevens, 1879-1955.

NOTES

The run time is 2:30 with one fifteen-minute intermission.
Video/audio recording of this performance by any means is prohibited.

SPECIAL THANKS

Ben Chasny: Thanks to Elisa Ambrogio for introducing me to Wallace Stevens.

Playwrights Local: Matt Sattler, Ludie Cummings, and The Centers for Families and Children; Alison Garrigan and Talespinner Children's Theatre; Waterloo Arts; Cindy Barber; Jen Gomez (graphic design); and all of our donors and supporters.

David Todd: Anjanette and all of the company; Peter Hanchak; Ben and Elisa; Maiko.

RIGHTS

Original works by Wallace Stevens incorporated in this play are drawn from the following publications:

OPUS POSTHUMOUS by Wallace Stevens
Copyright © 1957 by Elsie Stevens and Holly Stevens
Copyright renewed © 1985 by Holly Stevens
Copyright renewed © 1989 by Holly Stevens

COLLECTED POEMS OF WALLACE STEVENS by Wallace Stevens
Copyright © 1923, 1931, 1935, 1937, 1942, 1943, 1944, 1945, 1946, 1947,
1948, 1950, 1951, 1952, 1954 by Wallace Stevens
Copyright renewed © 1982 by Holly Stevens

SOUVENIRS AND PROPHECIES by Holly Stevens
Copyright © 1977 by Holly Stevens

THE NECESSARY ANGEL by Wallace Stevens
Copyright © 1958 by Alfred A. Knopf, Inc.

All works are performed by arrangement with Alfred A. Knopf, an imprint of The Knopf Doubleday Publishing Group, a division of Penguin Random House LLC.

PLAYWRIGHT



David Todd's plays have been presented or developed in NYC at theaters including 59E59, Dixon Place, the Little Theater, HERE, and NY Theatre Workshop, regionally in DC, Portland, and Chicago, and internationally at the LaMaMa Spoleto Open in Italy. His recent projects include *Objectively/Reasonable*, an ensemble-written play he conceived and edited on the 2014 Tamir Rice shooting, also produced by Playwrights Local. His playwriting residencies include Hangar

Theater (Ithaca, NY), Classic Studio (NYC), and Chicago Dramatists. He earned his MFA in Dramatic Writing at NYU and his PhD at the University of Illinois at Chicago. As a faculty member, he has taught writing, literature, and film at NYU, SUNY Stony Brook, and Otterbein University, and is currently teaching at Cleveland State University. He is a Usual Suspect at NY Theater Workshop and a collaborator with the NYC-based Monk Parrots. His nonfiction book *Feeding Back* was published in 2012 by Chicago Review Press, and his play *Joy in Repetition* was published in January 2014 by Connotation Press. He is the artistic director of Playwrights Local in Cleveland and the current Ohio Regional Representative for the Dramatists Guild. He was awarded an Individual Excellence Award by the Ohio Arts Council for 2016.

COMPOSER



Ben Chasny is the primary creative figure behind the musical group Six Organs of Admittance, which has produced nearly twenty albums and EPs since 1998. Six Organs' most recent recording, *Burning the Threshold*, was released in 2017 on Chicago's Drag City label; previous releases include 2015's *Hexadic* and *Hexadic II*, two sets of songs written with Chasny's own chance-based composition method. Earlier outings include 2011's *Asleep on the Floodplain*, 2009's

Luminous Night, and 2005's *School of the Flower*, the last of which earned raves such as "a front-to-end lovely, beguiling work" (*Arthur*) and "another step in a remarkable journey...full of that certain mercurial grace that makes each new offering from Six Organs of Admittance an essential listen" (*AllMusic*). Six Organs of Admittance has been featured in *The Quietus*, *Wire*, *Uncut*, *Bomb*, *Noisey*, *The Village Voice*, *PopMatters*, and *NPR*, among many others. Chasny's collaborations include the songwriting duos New Bums (with Donovan Quinn of Skygreen Leopards) and 200 Years (with Elisa Ambrogio of Magik Markers), as well as the experimental trio Rangda (with Sir Richard Bishop and Chris Corsano) and the psych-noise band Comets On Fire. Chasny has been described by *MusicOHM* as "a bona fide guitar god" and by *Pitchfork* as "one of the most consistently inspired personalities in indie rock."

DIRECTOR



Anjanette Hall's recent directing credits include Charles Mee's *Big Love*, *Callings: A Devised Piece*, Anton Chekov's *The Bear*, Performance Ensemble, *What is Love*, and *Broken Crown*, all at Baldwin Wallace University, where she is an Assistant Professor of Theatre. Her recent acting credits include *The Night Alive*, *An Octoroon*, *Becky Shaw*, *The Lyons*, and *The Motherfucker with the Hat* at Dobama Theatre; Eric Coble's *A Carol for Cleveland* at Cleveland Play House;

Three Sisters and *Heartbreak House* at Mamai Theatre; *Blithe Spirit* at Coach House Theater; *Snow Falling on Cedars* at Baltimore Centerstage; *Opus* at Two River Theatre; and *J.B.* and *Spring Awakening* at Red Stage Theatre Company. She has done a number of short films and commercials, and appeared as Gretchen Huber on NBC's *Ed*. Anjanette holds an MFA in Acting from Rutgers University and a BFA in Musical Theatre Performance from Western Michigan University. Her favorite roles to date are Mom to Jack (11) and Sebastian (2.5), and wife to Krys Perry.



WALLACE STEVENS

American Poet

Born: 1879, Reading, PA

Died: 1955, Hartford, CT

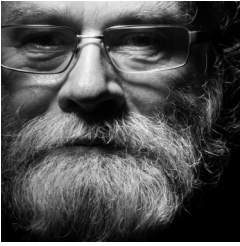
Anecdote of the Jar

I placed a jar in Tennessee,
And round it was, upon a hill.
It made the slovenly wilderness
Surround that hill.

The wilderness rose up to it,
And sprawled around, no longer wild.
The jar was round upon the ground
And tall and of a port in air.

It took dominion everywhere.
The jar was gray and bare.
It did not give of bird or bush,
Like nothing else in Tennessee.

CAST



Robert Hawkes (Mature Wallace Stevens) has appeared on many area stages, most recently as Uncle Maurice in *The Night Alive* at Dobama Theatre. He is a member of the acting company at convergence-continuum, where his play *Give Me the Map*, a prologue to King Lear, was produced last November.



Jason Markouc (Young Wallace Stevens) holds an MFA from the American Conservatory Theater in San Francisco. After many years and many plays in many places - he's taken time off to be a Dad. The most important role ever. He's grateful to Anjanette and David for the chance to be back for all of this - and absolutely in love with this wonderful cast. Love to Sara, and everything to LBKACJ.



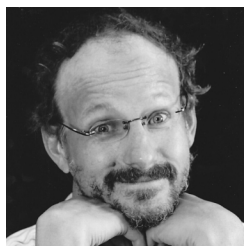
Laura Starnik (Elsie Stevens) has worked at many theaters in town: Beck Center, Blank Canvas, Clague Playhouse, Cleveland Play House, Cleveland Public Theatre, convergence-continuum, Dobama, Karamu, Mamai, none too fragile, Oberlin Summer Theater Festival, and Weathervane. Her most recent role was Mrs. Kirby in the Karamu production of *You Can't Take It With You*. Other recent credits include *All The Way* at Cleveland Play House

and *Lady Windermere's Fan* at Mamai. Laura is looking forward to her next project: *The Miracle Worker* at Oberlin Summer Theater Festival.



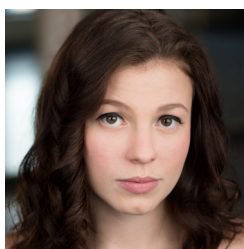
Tessa Hager (Holly Stevens) is currently an acting/directing major at Baldwin Wallace University. Recent productions at Baldwin Wallace include *The Pillowman* and *Quality Street*. In her free time, Tessa enjoys spending time outside, reading, drawing, and, of course, playing with her adorable puppy. She also loves being around people and cherishes her relationships with them. Her family is very dear to her and their strength is an inspiration to her art.

Her Oma especially is the strongest person that she knows. Working with her fellow cast and crew members has been a wonderful experience and Tessa would like to thank them for all of their hard work and dedication. She would also like to thank Anjanette Hall for providing her with this amazing opportunity. Additional thanks to her friends and family for their constant love and support.



great good fortune to be directed by Dale Heinen.

Robert Branch (Garrett Stevens, W. C. Williams, and Ensemble) first found out about Playwrights Local when he played a gatekeeper named Brian in Logan Smith's *Of Straw Dogs: A User's Guide to the Tao Te Ching* for their inaugural Cleveland Playwrights Festival. There he met Les Hunter, who was the playwright for their first full-length production. The play was entitled *To the Orchard*, and Rob eventually landed the role of Simcha Bergman and had the



receiving. Special thanks and much love to Anjanette Hall and David Todd.

Kenzie Critzer (Sybil Gage, Marianne Moore, and Ensemble) is a rising Junior BFA in acting student at Baldwin Wallace University. She's so excited to be participating in her first show at Playwrights Local! Her previous credits include Blank Canvas' *Cabaret*, *You Can't Take it with You*, *Callings: A devised piece*, *Big Love*, and *Company*. She would like to thank her family for their support, as well as the faculty of BW for the training she is



Magnolias, Berthe in Bob Fosse's *Pippin*, Hannah in Tony Kushner's *Angels in America*, and Mrs. Seizmagraff in Christopher Durang's *Betty's Summer Vacation*.

Jeanne Task (Kate Stevens, Mrs. Baldwin, and Ensemble) is very excited to be appearing at Playwrights Local, and working with Anjanette, who she appeared with in *The Lyons* at Dobama Theater. She has been active in the Cleveland theater scene for many years and has appeared at Ensemble Theater, Cain Park, True North, and CPT. Some other favorite roles include: Rita in Nicky Silver's *The Lyons*, Ouiser in Robert Harling's *Steel*

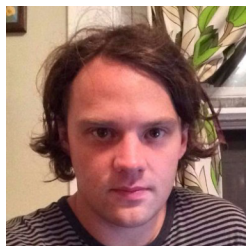


Marco Liguori (Robert Frost, Walter Arensburg, and Ensemble) is a freshman BFA Acting major at Baldwin Wallace University. Some of the productions he has been in this year include *Quality Street*, *The Pillowman*, *The Diviners*, and *Uncle Vanya*. He is grateful to have been given an opportunity to work with such talented people in such a rich artistic environment. He would like to thank his Mom, Dad, and friends for supporting and encouraging him.



Liam Stilson (Crispin, Ed Livingood, and Ernest Hemingway) is a Freshman BFA Acting Major at Baldwin Wallace University. His previous credits include understudy roles in *Angels in America Part Two: Perestroika* and *The Diviners*. Ensemble roles include *The Pillowman*, *Uncle Vanya*, and *The Diviners*. He thanks his friends for their support, and sends love to his parents and little brother.

PERFORMING MUSICIANS



John Elliott (Synthesizer/Electronics) is an electronic musician based in Cleveland. He is a former member of the ambient/kosmiche trio Emeralds, described by *AllMusic* as “One of the most prolific bands in an increasingly prolific noise/avant-garde underground...creating music that is at once pleasant, texturally rich, and teeming with complexity.” From 2006 to 2013, Emeralds produced dozens of CD-Rs, cassettes, 7”s, and albums on labels including Hanson,

Editions Mego, Ecstatic Peace!, and No Fun Productions. In 2010, their release *Does It Look Like I’m Here?* was named Album of the Year by *Drowned in Sound*, which praised it as “perfectly crafted.” Since leaving Emeralds, John has worked with Andrew Veres as Outer Space and with Sam Goldberg as Mist. He has also released albums including 2016’s *Annual Flowers in Color* and 2011’s *The Path of Spectrolite* under the moniker of Imaginary Softwoods. John is the curator of the Spectrum Spools imprint for Editions Mego. He received the 2016 Cleveland Arts Prize for Emerging Artist.



CREATIVE TEAM

Inda Blatch-Geib (Costume Designer): Inda's work as a costume and production designer for over 800 theatrical, commercial, and film releases has spanned thirty years and crossed four continents. Current commercial projects include costume design for the Cleveland Cavaliers' 1970's and 80's themed videos and five national spots for the team. Upcoming production design credits include a soon-to-be-released Showtime original film. Her print design has included set styling for *Harper's Bazaar UK's* Scarlett Johansson cover and spread as well as catalogue set styling for Foundations and Kilgore Trout. Inda's designs have been highlighted at the National Inventor's Hall of Fame/Smithsonian Institute "Exercising Ingenuity" exhibit as well as in national commercials for Microsoft, McDonald's, and TroyBuilt. Recent film projects include Ohio art direction for *The Signal* starring Laurence Fishburne. Music video work includes Machine Gun Kelly's "Alpha Omega" release. Inda is the 2016/2017 Resident Designer for CPT, Karamu, Magical Theatre Company, New World Performance Lab, and Cleveland Institute of Music. Inda was recently recognized with the Cleveland Critics Circle Award for *Blues in the Night*.

WALLACE STEVENS The Plain Sense of Things

After the leaves have fallen, we return
To a plain sense of things. It is as if
We had come to an end of the imagination,
Inanimate in an inert savoir.

It is difficult even to choose the adjective
For this blank cold, this sadness without cause.
The great structure has become a minor house.
No turban walks across the lessened floors.

The greenhouse never so badly needed paint.
The chimney is fifty years old and slants to one side.
A fantastic effort has failed, a repetition
In a repetitiousness of men and flies.

Yet the absence of the imagination had
Itself to be imagined. The great pond,
The plain sense of it, without reflections, leaves,
Mud, water like dirty glass, expressing silence

Of a sort, silence of a rat come out to see,
The great pond and its waste of the lilies, all this
Had to be imagined as an inevitable knowledge,
Required, as a necessity requires.

Nora DeMilta (Assistant Director) is thrilled to be working on *Things as They Are*. A junior Theatre and Arts Management student at Baldwin Wallace University, Nora is thankful to work with Playwrights Local. Earlier this year, Nora was the assistant director for another PL show, *This is NOT About My Dead Dog*. Nora thanks Natalie, Brooke, and The Arts House for their kindness and support.

Cleo DeOrio (Commedia dell'arte Choreographer) is a movement-based theatre artist from Dell'Arte International. Her background is in directing and choreography, with an emphasis on physical theatre. After graduating from BWU, Cleo went on to a masters degree and is now based in Humboldt County, CA. Her original works include *OHM* and dance works on themes including women's history. She is currently running the dance club at Dell'Arte International and devising a new work for the Placerville, California FRINGE festival.

Tom Hayes (Carpenter) is an award-winning playwright who received his MFA from Cleveland State University and the NEOMFA program. His play *Lord of the Burgeoning Lumber* was staged at convergence-continuum and was awarded Best Original Script by a Local Playwright — 2008 by Rave and Pan. Tom's play *Patterns* was staged at Cleveland Public Theatre in 2011. Other plays have appeared at the Manhattan Project - Cleveland Lab and Playwrights Local.

Michael Hinton (Dance/Movement Choreographer): Born and raised in Broomfield, CO, Michael Hinton started competitive gymnastics when he was five. After three years in the USAG program, Michael left gymnastics to attend the

WALLACE STEVENS **The Snow Man**

One must have a mind of winter
To regard the frost and the boughs
Of the pine-trees crusted with snow;

And have been cold a long time
To behold the junipers shagged with ice,
The spruces rough in the distant glitter

Of the January sun; and not to think
Of any misery in the sound of the wind,
In the sound of a few leaves,

Which is the sound of the land
Full of the same wind
That is blowing in the same bare place

For the listener, who listens in the snow,
And, nothing himself, beholds
Nothing that is not there and the nothing that is.



Ballet Nouveau Colorado (BNC). At fifteen, after seven years at BNC, Michael was accepted into The School of American Ballet. He moved to New York, where he trained for three years before accepting a contract with Verb Ballets in Cleveland.

Emily Kovalcik (Prop Designer) is a recent Baldwin Wallace University graduate. She has previously designed props for *Intimate Apparel*, *The Diviners*, and *Pillowman*. She would like to thank Terri and Fran.

T. Paul Lowry (Set & Projection Designer) has served in artistic, production, and design capacities with Long Wharf Theatre, Playwrights Horizons, New Haven Theater Company, Eugene O'Neill Theatre Center, Near West Theatre, Talespinner Children's Theatre, and Celebrity Cruises. He is the Technical Theatre Director for Hathaway Brown School. Recent design work: *Fire on the Water*, *Johanna: Facing Forward* (CPT); *Uz, Donde Esta My Home* (Teatro Publico de Cleveland), *The Turing Machine* (Theatre Ninjas), *Next to Normal* (TrueNorth), *Run to the Capulets*, *Raise up the Montagues* (Cuyahoga Community College), and *To the Orchard* (Playwrights Local). Learn more at www.tpaulowry.com.

Jonathan Maag (Lighting Designer) previously worked with Playwrights Local on *To the Orchard*. He received his BA in Theatre from Miami University. Favorite past designs: *Spring Awakening* at Oberlin College; *Spirits to Enforce* at CPT; *Les Miserables*, *Dreamgirls*, *Cinderella* at Fort Wayne Civic Theatre; *Dorothy and the Wizard of Oz* at Cortland Repertory Theatre; *Guys and Dolls*, *Snow White* at Allenberry Playhouse; and *Miss Witherspoon* at Miami University.

Francesca Mamlin (Stage Manager) is on her third show with Playwrights Local. She was the production manager for *To the Orchard* and *This is NOT About My Dead Dog*. Francesca is a recent graduate of Baldwin Wallace University with a BA in theatre. She is excited to be working on this production!

Elizabeth Tofig (Dramaturg) is a freshman theatre student at Baldwin Wallace University with a concentration in directing. Libby has been involved with a variety of shows at BW including *Angels in America*, *The Diviners*, and *The Sandalwood Box*. She would like to thank the cast and crew for such a wonderful experience!

Kelly Tomko (Production Manager), junior at Baldwin Wallace University, is currently studying Stage Management/Arts Management, and aspires to manage corporate events after graduation. Her credits include Electric Forest Festival, fyoozh en '17, Burning River Festival, Cleveland Clinic Children's Gala, and Metro PCS Awards in Texas. She thanks the entire team for their support. Break Legs!

Dusten Welch (Fight Choreographer) is an award-winning choreographer, educator, and director. He has choreographed violence for more than fifty theatrical and film productions. Dusten is the resident choreographer for Baldwin Wallace University and the Academy for the Performing Arts. His freelance work includes Great Lakes Theatre, Dobama, and Ensemble Theatre. Dusten is the administrative director and a teacher at the Academy for the Performing Arts.

ABOUT PLAYWRIGHTS LOCAL

Playwrights Local is dedicated to supporting the dramatists of Northeast Ohio. As a playwrights' development and production center, we foster diverse talents and present locally written works.

SUPPORT FOR PLAYWRIGHTS LOCAL

\$5000 +

The AHS Foundation
The Cleveland Foundation
The City of Cleveland Cable Television Minority Arts &
Education Fund of the Cleveland Foundation
Cuyahoga Arts & Culture
The George Gund Foundation
The Ohio Arts Council
Stephen and Rita Todd

\$1000+

The Cyrus Eaton Foundation
Mike Geither and Jaime Bouvier
Thomas Hayes
David Todd

\$100+

Mark and Patricia Averbach
Richard Bongorno
Genevieve Costanzo
Carol Dolan
Nivi Engineer
Les Hunter
Michael Laurenty
Arwen Mitchell
Faye Sholiton
Patrick Walker

\$500+

The Arch and Bruce Brown
Foundation
Laura Cleveland
Eileen O'Leary

\$25 to \$100

David and Roberta Bongorno
Cathleen Carey
Adrienne Gosselin
Susan Hayes
Johnny Mango World Cafe
Christina Mcvay
Krystyna Orlowski
Pandora Robertson
Edward J. Walsh
Elizabeth Wilkes

THE AHS FOUNDATION



The Cyrus Eaton Foundation

THE GEORGE GUND
FOUNDATION

